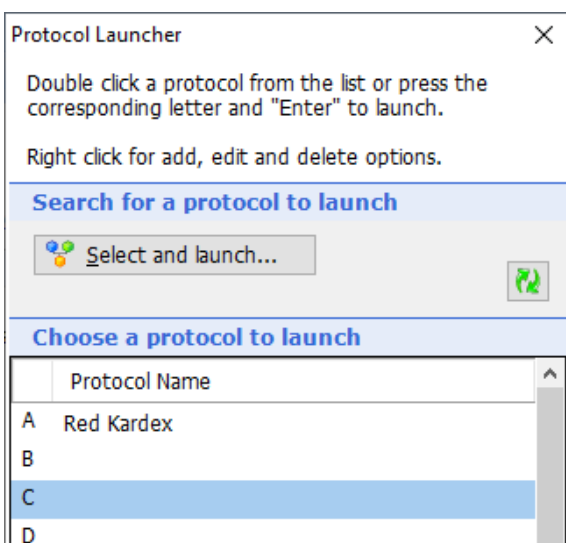


NECS Clinical Systems Specialist Team EMIS Web – F12 Protocol Launcher

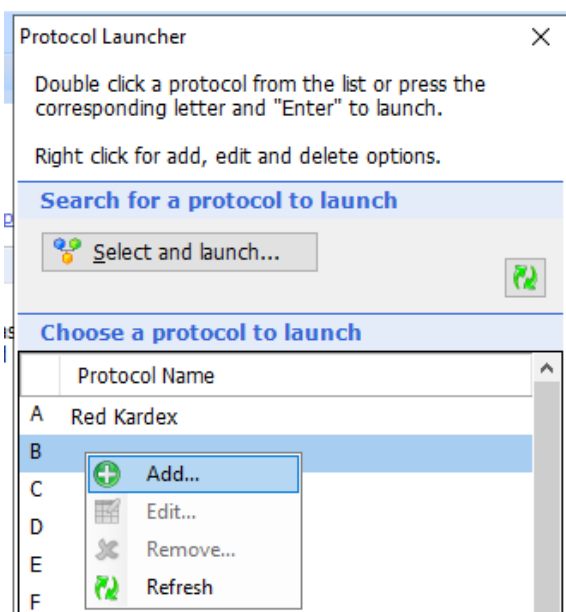
Adding a Protocol to F12 Launcher

Note: the protocol must already be created and active before you can add to the F12 Protocol Launcher.

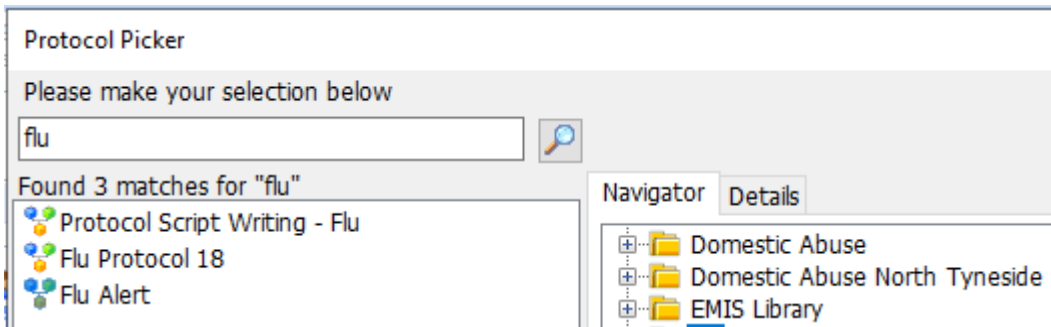
1. Press **F12** to load the Protocol Launcher



2. Right click on the relevant letter, and select **Add**



3. **Search** for the protocol you wish to add to the Protocol Launcher, highlight it and click **OK**.

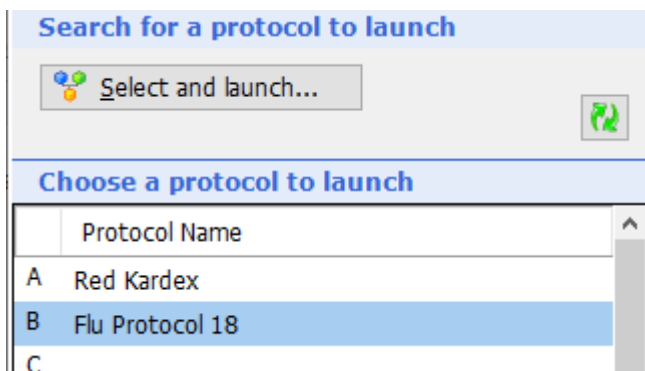


4. Repeat steps above to add additional protocols

Note: this must be added to each user individually when they are logged in to EMIS

Running a Protocol from F12 Launcher

1. Select the Patient you wish to run the protocol for, and press **F12**
2. Double click the relevant protocol to launch it for the selected patient, or press the **corresponding letter** and then press **enter** to launch it



Edit or Remove a Protocol from F12 Launcher

1. Press **F12** to load the Protocol Launcher
2. Right click on the relevant letter, and select **Edit** to amend the protocol or **Remove** to remove the protocol from the launcher

